



Pakistan

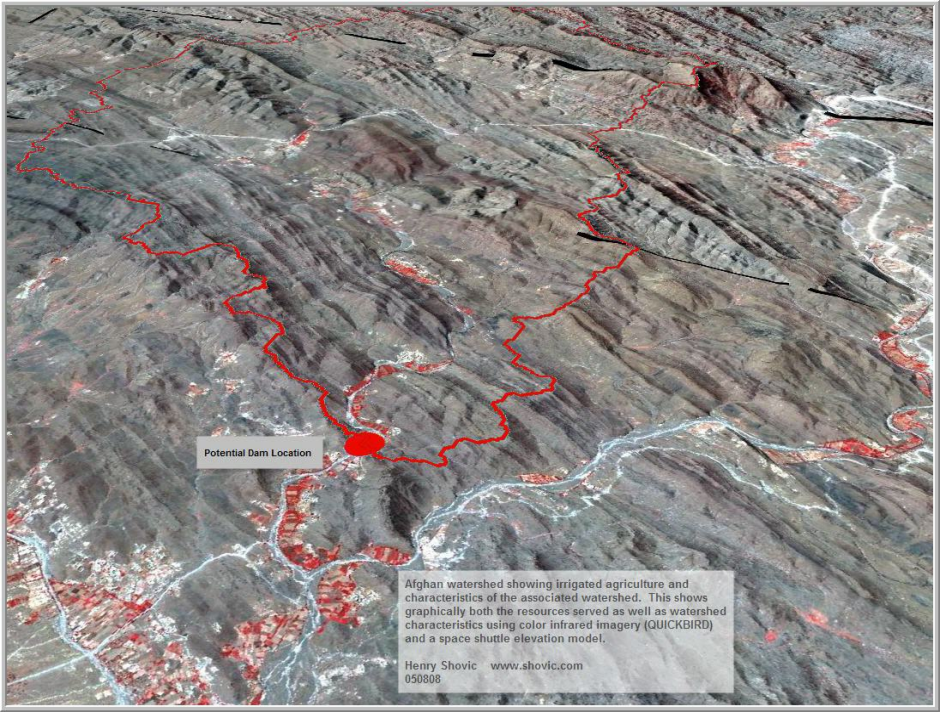
Afghanistan

Recent Logging

Color Infrared 3D image of deforestation on Pakistan/Afghanistan Border. This is probably recent timber theft from Pakistan. This image graphically displays steep slopes being cut over, at the upper end of a watershed, increasing stream sediment and flooding in Afghanistan. Made using ARCGLOBE and 1 m resolution QUICKBIRD imagery with space shuttle elevation model

Henry Shovic, www.shovic.com

050808



Potential Dam Location

Afghan watershed showing irrigated agriculture and characteristics of the associated watershed. This shows graphically both the resources served as well as watershed characteristics using color infrared imagery (QUICKBIRD) and a space shuttle elevation model.

Henry Shovic www.shovic.com
050808