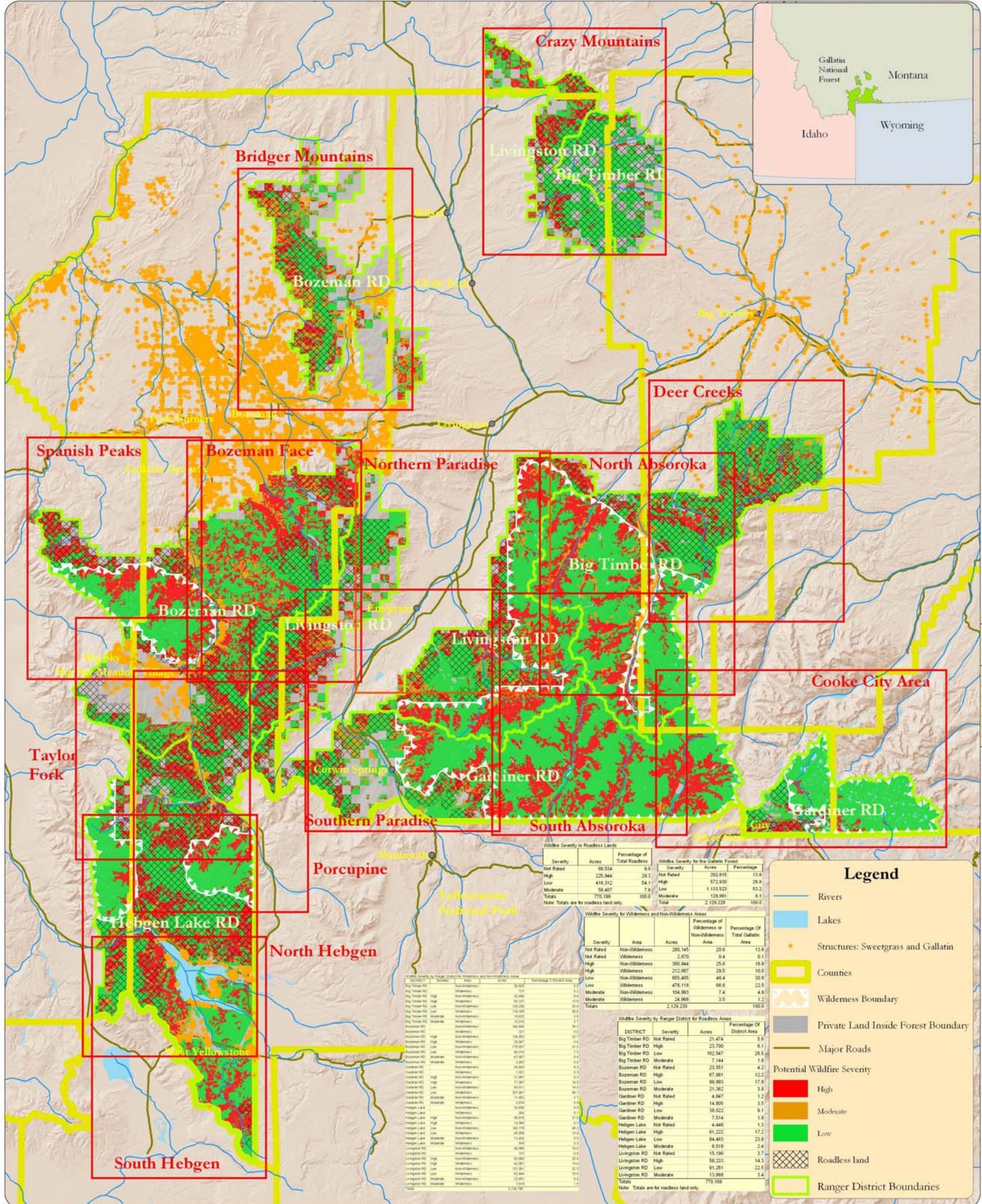


Gallatin National Forest: Overview of Potential Wildfire Severity, Values at Risk, and Roadless Lands, vs 1.0 including Indices for 1:48,000 maps



This map was made for a general assessment of wildfire risk on the Gallatin National Forest. Its objectives are to show potential wildfire severity (based on cover type from stand-level data (Leritz and Shea, 2000)) and values at risk as represented by structures. Red rectangles index more detailed (1:48,000) maps of the same data.

The layers used are from the Gallatin N. F. GIS library and county data. Structures are mapped in detail only for Gallatin and Sweetgrass counties. Other built-up areas are symbolized by towns.

Map by Henry Shovic

Map Document: (E:\files\fstmp\so\resource\gallatin\Wildfires\FuelsProjects\SeverityRisk\OverallFireRiskAnalysisMapAndIndexes10.mxd) 9/7/2004 -- 12:05:40 PM

1:240,000

