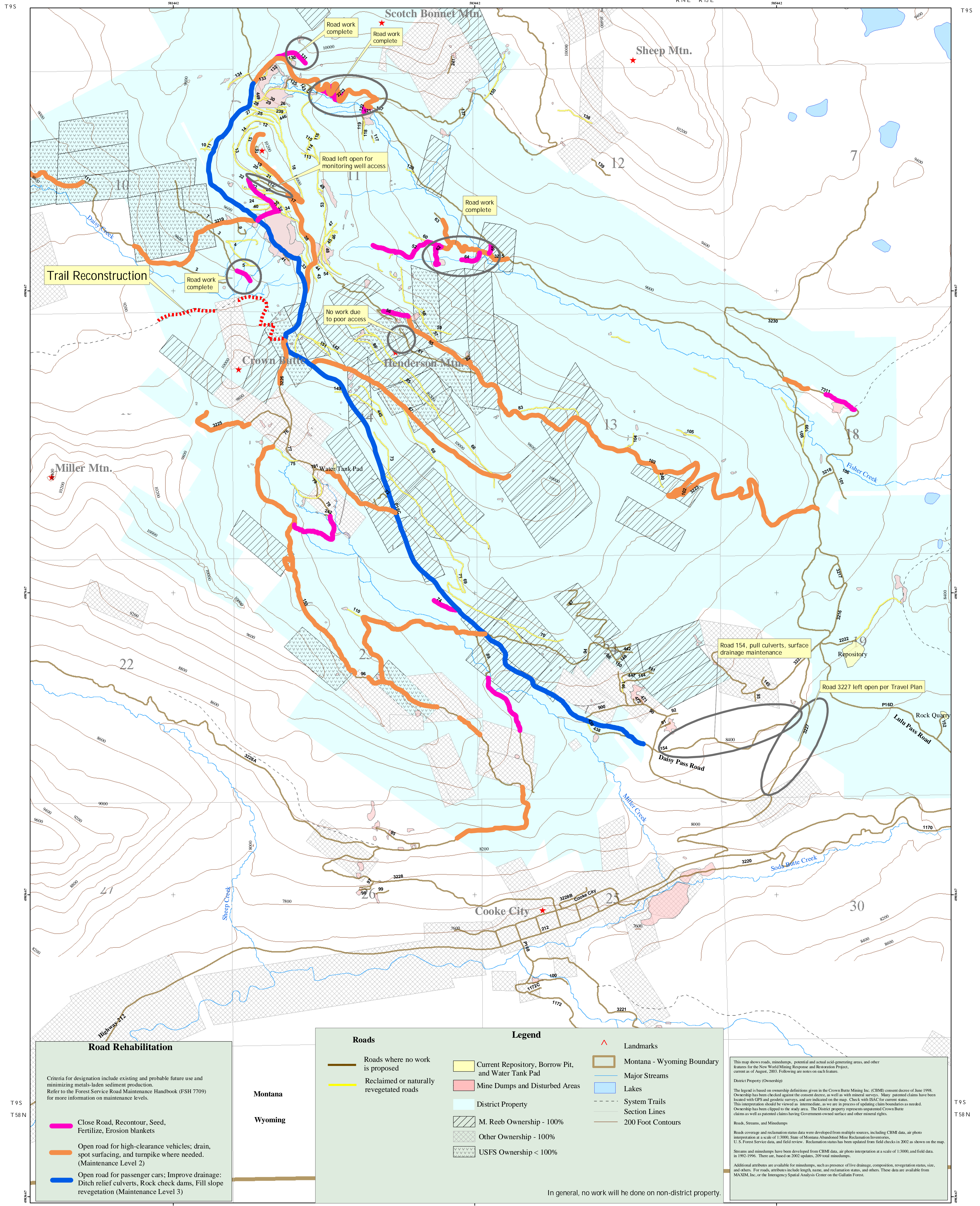


# New World Mining District Response and Restoration Project - Road Rehabilitation and Management

## 1: Changes from Previous Decisions, 2: Completed Segments, 3: 2007 Work Vs. 1.6



**Road Rehabilitation**

Criteria for designation include existing and probable future use and minimizing metals-laden sediment production. Refer to the Forest Service Road Maintenance Handbook (FSH 7709) for more information on maintenance levels.

- █ Close Road, Recontour, Seed, Fertilizer, Erosion blankets
- █ Open road for high-clearance vehicles; drain, spot surfacing, and turnpike where needed. (Maintenance Level 2)
- █ Open road for passenger cars; Improve drainage: Ditch relief culverts, Rock check dams, Fill slope revegetation (Maintenance Level 3)

**Roads**

- █ Roads where no work is proposed
- █ Reclaimed or naturally revegetated roads

**Legend**

- █ Current Repository, Borrow Pit, and Water Tank Pad
- █ Mine Dumps and Disturbed Areas
- █ District Property
- M. Reeb Ownership - 100%
- Other Ownership - 100%
- USFS Ownership < 100%
- ▲ Landmarks
- Montana - Wyoming Boundary
- █ Major Streams
- █ Lakes
- █ System Trails
- █ Section Lines
- █ 200 Foot Contours

This map shows roads, mine/dumps, potential and actual acid-generating areas, and other features for the New World Mining District Response and Restoration Project, current as of August 2007. Following are notes on each feature.

**District Property (Ownership)**

The signal is based on ownership definitions given in the Crown Butte Mining Inc. (CBMI) consent decree of June 1998. Ownership has been checked against the consent decree, as well as with mineral surveys. Many patented claims have been located with GPS and geospatial surveys, and are indicated on the map. Check with BAC for current status. This interpretation should be viewed as an intermediate, as we are in process of updating claim boundaries to match. Ownership has been clipped to the study area. The District property represents implemented Crown Butte claims as well as patented claims having Government-owned surface and other mineral rights.

**Roads, Streams, and Mine/dumps**

Road coverage and reclamation status data were developed from multiple sources, including CBMI data, air photo interpretation at a scale of 1:3000, State of Montana Abandoned Mine Reclamation Inventories, U.S. Forest Service data, and field review. Reclamation status has been updated from field checks in 2002 as shown on the map. In 1992-1996, there are based on 2002 updates, 200 road mine/dumps.

Streams and mine/dumps have been developed from CBMI data, air photo interpretation at a scale of 1:3000, and field data in 1992-1996. There are based on 2002 updates, 200 road mine/dumps.

Additional attributes are available for mine/dumps, such as presence of live drainages, composition, revegetation status, size, and others. For roads, attributes include length, name, and reclamation status, and others. These data are available from MAXIM, Inc. or the Intermountain Spatial Analysis Center on the Gallatin Forest.

In general, no work will be done on non-district property.

This plot was created using project level data for the New World Mining District Project. Except where noted, it was digitized at a scale of 1:3000 with a positional error of less than 3 meters. It is of adequate accuracy to plan individual projects, but not necessarily for engineering design purposes. Sources of data are aerial photography interpretation, Crown Butte Mines Inc. data, field investigations, State of Montana data, and U.S. Forest Service data. Plot by Henry Shook, Intermountain Spatial Analysis Center, Gallatin National Forest



**VERSION HISTORY**

- V. 1.0 Dec 28, 2006, changes per Marks, Werner (note graphic for road 32)
- V. 1.1 Sep 19, 2006, upgrade to new software, no change in roads
- V. 1.2 Nov 11, 2003, changed roads 72, 81, 87, 88, 89, 94, 148, 150, 448 to no work
- V. 1.3 Nov 1, 2003, added ownership layers
- V. 1.4 additional changes by Mary Beth Marks on Oct. 14, 2003, including collapse of categories and revision of definitions
- V. 1.5 additional changes by Mary Beth Marks on October 6, 2003 (roads 2311, 1, 3204, and trail reconstruction)
- V. 1.6 The current map has all the changes shown below plus a review by Mary Beth Marks on August 28, 2007

Earlier maps have the following changes. These are on the mapfile titled roadrehabmanagement00101015.mxd and these versions reflect those changes:

- V. 1.1 small changes in management, roads 3218, 3216, 3217, 91, 92, 3, 26, and 54, plus lengthening of route 218 w/ MB Marks June 11, 2003
- V. 1.4 symbology improvement; no management change May 5, 2003
- V. 1.3 review of March 26, 2003
- V. 1.1, 1.2 interim reviews in 2002
- V. 1.0 preliminary management recommendations 2002